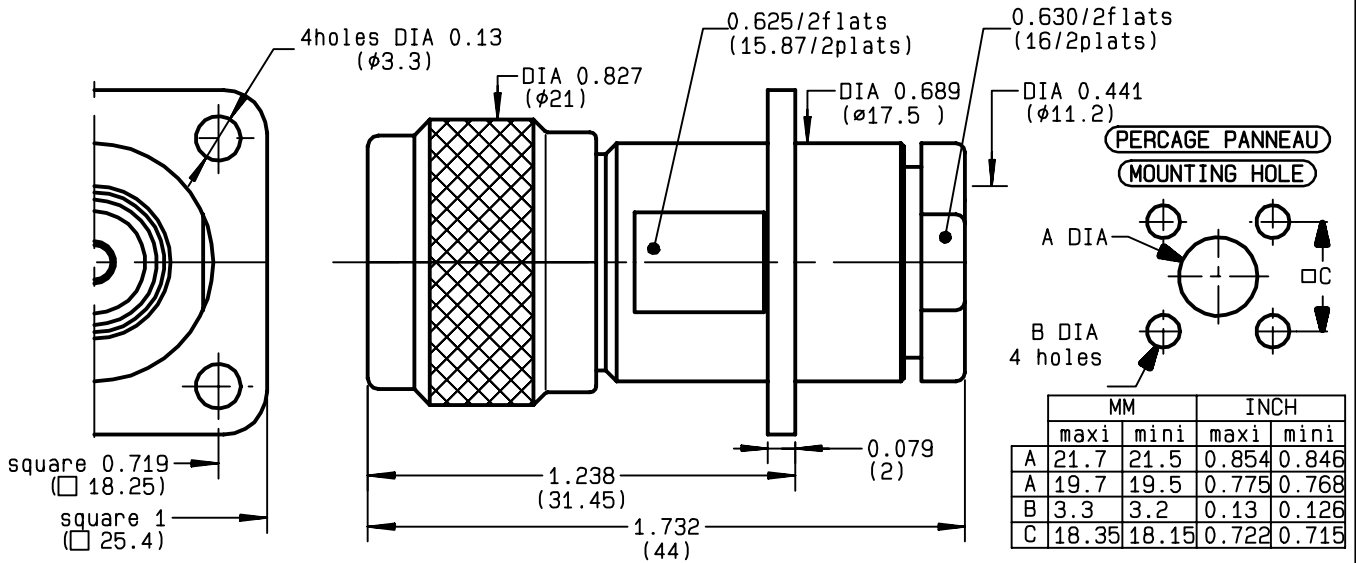


**STRAIGHT SQUARE FLANGE PLUG  
CLAMP TYPE - CABLE 10+11/50+75**

**R161.118.000**  
**SERIES N**



NOMINAL IMPEDANCE	<b>50</b> Ω
FREQUENCY RANGE	<b>0-11</b> GHz
TEMPERATURE RATING	<b>-55/+155</b> °C
V.S.W.R	<b>1.30</b> + x F(GHz)Maxi
RF INSERTION LOSS	<b>0.048</b> √F(GHz) dB Maxi
VOLTAGE RATING	<b>1400</b> Veff Maxi
DIELECTRIC WITHSTANDING VOLTAGE	<b>2500</b> Veff Mini
INSULATION RESISTANCE	<b>5000</b> MΩMini
HERMETIC SEAL	<b>NA</b> Atm.cm <sup>3</sup> /s
LEAKAGE (pressurized only)	<b>NA</b>
MECHANICAL DURABILITY	<b>500</b> Cycles
WEIGHT	<b>56</b> gr
SPECIFICATION	

- CABLES : **KX 4**  
**KX 8**  
**RG 11**  
**RG 144**  
**RG 165**  
**RG 213**  
**RG 214**  
**RG 216**  
**RG 225**  
**RG 393**

OTHERS CHARACTERISTICS

CABLE RETENTION	<b>200</b>	N Mini
CENTER CONTACT RETENTION		
Axial force - mating end	<b>NA</b>	N Mini
Axial force - opposite end	<b>NA</b>	N Mini
Torque	<b>NA</b>	cm.N Mini
RECOMMENDED TORQUES		
Mating	<b>130</b>	cm.N
Panel nut	<b>NA</b>	cm.N
Clamp nut	<b>500</b>	cm.N

CONNECTOR PARTS	MATERIALS	FINISH	(all values are given in micrometers)
BODY	BRASS	BBR 2	
OUTER CONTACT	BRASS	BBR 2	
CENTER CONTACT	BRASS	GOLD 0.5 OVER NICKEL 2	
INSULATOR	PTFE	-	
GASKET	SILICONE RUBBER	-	
OTHERS PIECES	BRASS	BBR 2	

ISSUE	CREATION DATE	FILE PART-NUMBER
<b>9910P00</b>	<b>12/06/1980</b>	<b>EPC 96-07</b>



B.E

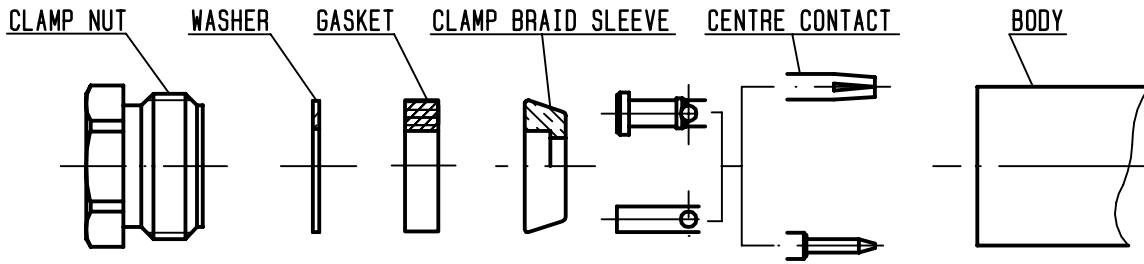
The information given here is subject to change without notice.  
Design changes may be in order to improve the product .

Connect to the future



**R161.118.000**

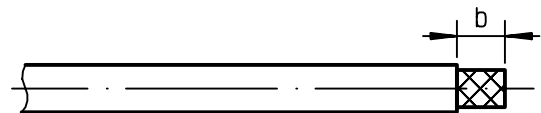
ISSUE **9910P00** SERIES **N**



①

Strip the cable .

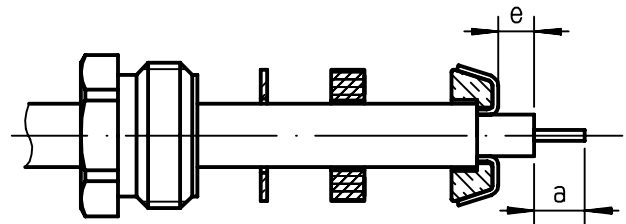
-  
-  
-  
-



Stripping	a	b	c	d	e
inch	0.177	0.394	0	0	0.059
mm	4.5	10			1.5

②

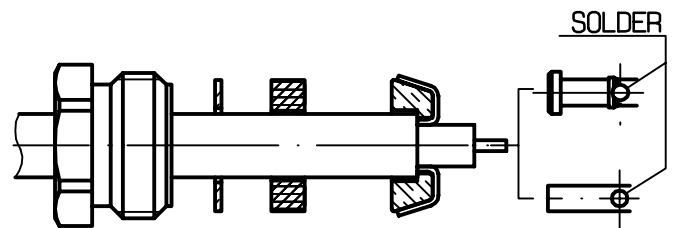
Slide the clamp nut , the washer and the gasket onto the cable .  
Slide clamp braid sleeve over braid .  
Fold back braid and trim off excess of braid .  
Trim back dielectric as shown .



③

Solder the cable inner conductor into center contact .

-  
-  
-  
-



④

Screw sub-assembly into the connector body .  
( recommended coupling torque 44.25 in.lb )

-  
-

